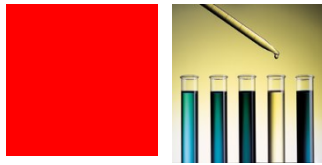


PRODUCT AND
TECHNOLOGIES FOR
PERMANENT
COATING

WITH AN ATTENTIVE
EYE TO NATURE



PERMANENT COATING

WHAT IS A PERMANENT COATING?

PERMANENT COATINGS, ALSO CALLED THIN ORGANIC COATINGS, ARE CHEMICALS CONTAINING POLYMERS, CORROSION INHIBITORS AND ADDITIVES OF DIFFERENT NATURE –AMONG THEM PIGMENTS WHICH ARE APPLIED ON METAL SURFACES TO FORM A THIS DEPOSIT WITH THICKNESS OF APPROX 1 MICRON

WHERE ARE THEY APPLIED?

PERMANENT COATINGS ARE MAINLY USED ON HOT DIP GALVANIZED SUBSTRATES. THEY ARE APPLIED BY CHEMICAL COATER ON COIL, OR BY SPRAY ON TUBES, WIRES AND OTHER.



FOR MORE SPECIFIC CASES, THE PRODUCTS ARE ALSO APPLIED ON OTHER SUBSTRATES SUCH AS ALUMINUM, ZINC AND STAINLESS STEEL

WHICH ARE THEIR CHARACTERISTICS?

PERMANENT COATINGS SHOULD HAVE THE FOLLOWING CHARACTERISTICS:

- ADHESION AND SCRATCH RESISTANCE
- ABILITY TO INCREASE THE CORROSION RESISTANCE OF THE METALS
- ANTI FINGERPRINT PROPERTIES
- STABILITY TO THE UV RAYS
- CHEMICAL RESISTANCE TO COOLANTS
- CHEMICAL RESISTANCE TO DETERGENTS AND CLEANING SOLVENTS
- OVERPAINTABILITY
- FOAMABILITY
- RESISTANCE TO TEMPERATURE
- PLEASANT AESTHETIC APPEARANCE WITH COLOURS BELOW WHICH THE METAL REMAINS VISIBLE
- SELF-LUBRICATING PROPERTIES



ACCORDING TO THE USE OF THE COATED MATERIAL, SOME CHARACTERISTICS ARE MORE IMPORTANT THAN OTHERS AND, CONSEQUENTLY, FORMULATIONS ARE MODIFIED TO MEET THE SPECIFIC REQUIREMENTS

A NET GRAPH, AS THE ONE AT THE LEFT SIDE, IS SHOWN ON THE TECHNICAL DATA SHEET OF THE PRODUCT AND GIVES, AT FIRST GLANCE, A PICTURE OF THE CHARACTERISTICS OF THE DEPOSIT WHICH WILL BE FORMED.

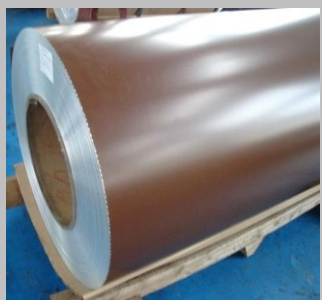
STANDARD PERMANENT COATING

THE MAIN BASIC PRODUCTS PROPOSED BY CONDOROIL CHEMICAL ARE

- CONDORCOAT PC 600:** HEXAVALENT CHROMIUM BASED PRODUCT
- CONDORCOAT PC 200:** TRIVALENT CHROMIUM BASED PRODUCT
- CONDORCOAT PC 300:** CHROME FREE PRODUCT

THE ABOVE MENTIONED PRODUCTS CAN BE USED AS COLOURLESS ANTIFINGER OR AS BASES FOR THE PRODUCTION OF COLOURED ANTIFINGERS

THE MOST REQUESTED COLOURED PRODUCT ARE TODAY :



CONDOROIL CHEMICAL, FOCUSED ON SURFACE TREATMENT FOR MORE THAN 40 YEARS, PROPOSE A SERIES OF INNOVATIVE AND HIGH PERFORMING PERMANENT COATINGS. HERE YOU WILL FIND A SELECTION OF THE MAIN PRODUCTS..

PERMANENT COATING WRINKLED



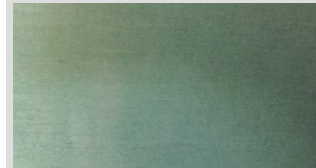
CONDORCOAT PC 800 SERIE HAS BEEN FORMULATED TO PROVIDE A HIGHER AESTHETIC ASPECT TO THE SURFACE THROUGH FORMATION OF A TEXTURIZED DEPOSIT

RANGE OF COLOURS IS VIRTUALLY UNLIMITED

STANDARD COLOURS ARE THE FOLLOWING

- CONDORCOAT PC 805** NIGHT BLUE
- CONDORCOAT PC 806** GREEN
- CONDORCOAT PC 801** YELLOW
- CONDORCOAT PC 803** RED TILE
- CONDORCOAT PC 809** BLACK

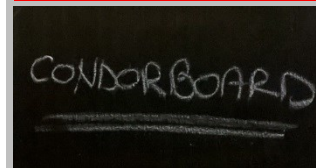
PERMANENT COATING "NATURE EFFECT"



PARTICULAR AESTHETIC CHARACTERISTICS ARE ALSO REACHED BY USING PERMANENT COATING OF **CONDORCOAT PC 700** SERIE

IN THIS CASE THE USE OF PARTICULAR PIGMENTS PROVIDES TO THE SURFACE A SO CALLED "NATURE EFFECT" THAT IS WELL SUITED FOR REALIZATION OF WORKS IN CONTACT WITH NATURE

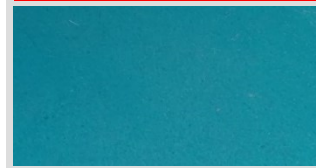
PERMANENT COATING CONDORBOARD



A NEW APPEALING FINISH IS A BLACKBOARD EFFECT DEPOSIT

ON THE BLACK SURFACE THAT IS CREATED ON THE COIL WITH THE APPLICATION OF THE **CONDORBOARD** SERIE IT IS POSSIBLE TO WRITE USING CHALK MARKER AND THEN DELETE THE TEXT WITH THE AID OF A MUD CLOTH

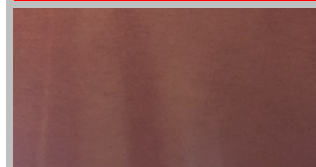
PERMANENT COATING FOAMABLE



THE FOAMING PERMANENT COATINGS OF **CONDORCOAT PC 400** SERIES FIND PRIMARY USE AS AN ECONOMICAL ALTERNATIVE TO CYCLES PRIOR TO PAINTING FOR THE PRODUCTION OF SANDWICH PANELS OF GALVANIZED STEEL OR ALUMINUM

DUE TO THEIR CHARACTERISTICS, THEY ARE ALSO RECOMMENDED FOR THE PRODUCTION OF ALVEOLAR SANDWICHES FOR BONDING WITH INTERNAL STRUCTURE.

PERMANENT COATING SELF-LUBRICANT



WHEN HIGH SELF-LUBRICATING PROPERTIES ARE REQUIRED, THE PERMANENT COATINGS OF THE SERIES **CONDORCOAT PC 500** ARE THE PREFERRED OPTION

DUE TO THEIR CHARACTERISTIC, THEY ARE USED ON SHEETS THAT MUST BE SUBJECTED TO STRONG DEFORMATION OR ON PIPES AND WIRES AFTER SKINPASS, ROLLING OR DRAWING PROCESSES.